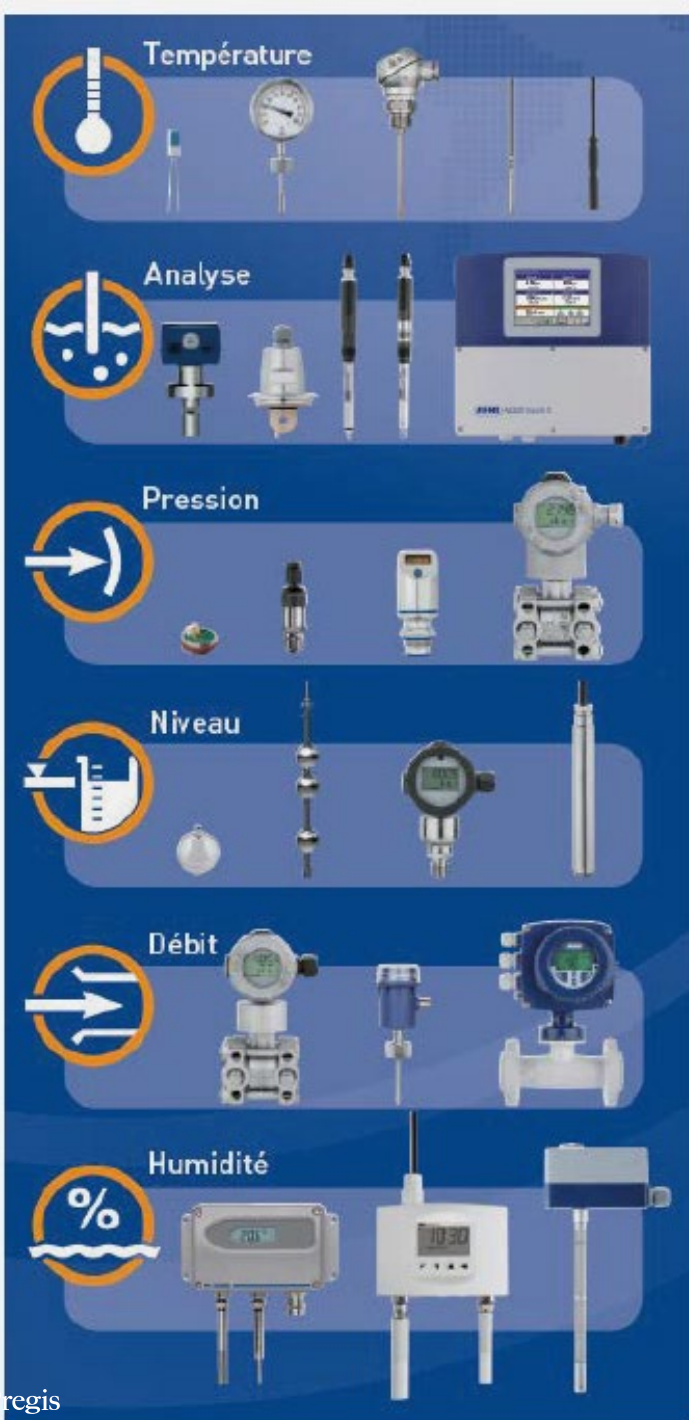




JUMO REGULATION CUSTOMER STORY

Enabling growth





JUMO is a leading global supplier of components and systems for individual sensor and automation solutions.

JUMO has specialized in the fast and flexible fulfillment of individual requirements. The extensive product range offers components and systems for almost all industries involved in the planning, construction, maintenance and optimization of machines and plants.



THE CHALLENGE

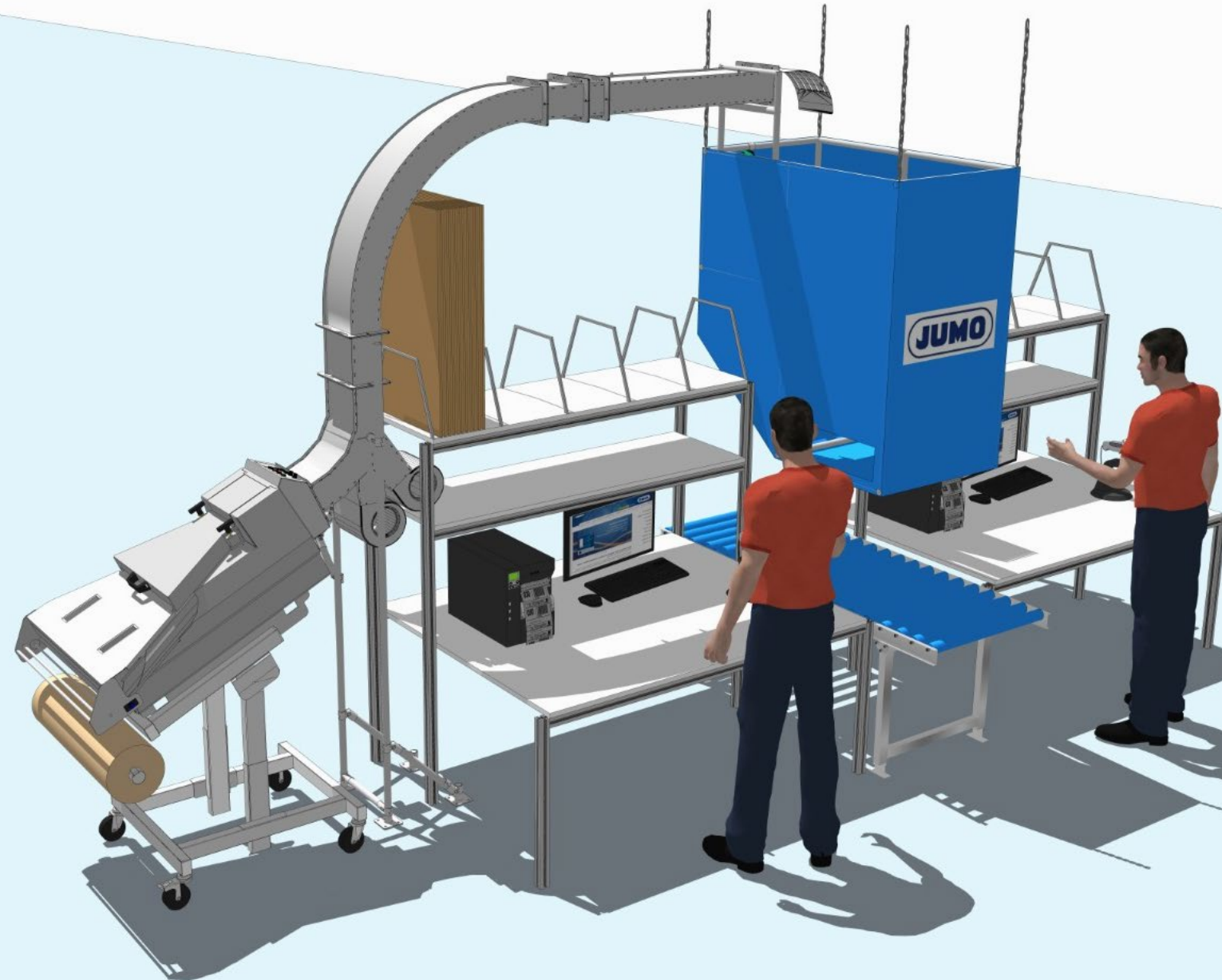
- > To accommodate the company's growth, Jumo planned to add an additional permanent packer.
- > The packing process needed to be redesigned as the existing solution was not suitable to efficiently and ergonomically supply a second packer with paper pads.
- > For Jumo it was essential that the new solution was suitable for the double ply 70/ 52 GSM paper which ensured perfect protection of their products during shipment.

THE SOLUTION

Pregis designed a straightforward yet efficient solution.

The new set up exists of the Packmaster Pro with transport via air ducts to one bin, supplying 2 pack stations with paper pads.

- > 1x Packmaster Pro
- > 1 bin with 2 pack stations
- > Length of the air ducts ~3.5 m
- > 70/ 52 GSM paper on rolls





THE RESULT



- > This straightforward yet efficient solution allows a constant availability of buffers. With its two openings, the overhead bin supplies two packers with pads, thus facilitating the packers' daily work in an ergonomic way.



- > The use of double-ply paper was essential for the protection of the goods of Jumo. A test with this paper was conducted at the Pregis facility to ensure the installation was functional and would run smoothly.



- > Today, Jumo runs without trouble 60 cm. long pads of 52/70 gsm.
- > Jumo's customers visit the company on a regular basis. Special attention was paid to the shape of the bin as well as the position of the logo's on it, to give them maximum visibility and support for the Jumo brand.

Bernard Seywert **Warehouse manager** **Jumo Regulation**



As part of our development, we needed to find a solution that would optimize our workstations and thus reduce our packaging time. Pregis, with whom we have been partners for more than 15 years, used all its experience with its engineering department to find the ideal process in every respect".

"Today we are able to cope with any situation and to increase our volumes without constraints and with efficiency".





Pregis

PROTECT, PRESERVE & INSPYRE



00800 8888 8840

Customer.care@pregis.com

www.PregisEU.com